



ELSEVIER

Computers & Geosciences ■ (■■■■) ■■■-■■■

**COMPUTERS &
GEOSCIENCES**

www.elsevier.com/locate/cageo

SRTM-based morphotectonic analysis of the Poços de Caldas Alkaline Massif, southeastern Brazil

Carlos Henrique Grohmann^{a,*}, Claudio Riccomini^b, Fernando Machado Alves^a

^aPrograma de Pós-Graduação em Geoquímica e Geotectônica, Instituto de Geociências, Universidade de São Paulo, Rua do Lago, 562, 05508-080 SP, Brazil

^bDepartamento de Geologia Sedimentar e Ambiental, Instituto de Geociências, Universidade de São Paulo, Rua do Lago, 562, 05508-080 SP, Brazil

Received 20 December 2005; received in revised form 2 May 2006; accepted 11 May 2006

Abstract

An evaluation of SRTM 03" data applicability in geomorphology and morphotectonic analysis is proposed, considering the morphometric parameters slope, aspect, surface roughness and isobase surface. The study area, in southeastern Brazil, comprises the Poços de Caldas Alkaline Massif, a 33 km-diameter Late Cretaceous collapsed volcanic caldera. Morphometric indices evaluated showed the correlation of landscape within the massif with NE-SW and NW-SE structures, as well as landforms related with recent tectonic influence. DEM-derived drainage presented satisfactory results when compared to a 1:50,000 topographic map. SRTM 03" proved to be a good resource for geomorphological analysis, up to the semi-detail scale.

© 2006 Published by Elsevier Ltd.

Keywords: SRTM; DEM; Morphometric analysis; Geomorphology; Poços de caldas; Alkaline massif

1. Introduction

Morphometric analysis, or geomorphometry, is the practice of terrain modeling and ground-surface quantification, through applications of earth sciences, mathematics, engineering and computer science (Pike, 2002). Geographic Information Systems (GIS) and Digital Elevation Models (DEMs) allow speed, precision and reproducibility to calculation of morphometric parameters.

*Corresponding author. Tel.: +55 11 30914216; fax: +55 11 30914258.

E-mail addresses: guano@usp.br, carlos.grohmann@gmail.com (C.H. Grohmann), riccomin@usp.br (C. Riccomini), fernando.alves@erm.com (F.M. Alves).

The release of Shuttle Radar Topography Mission (SRTM) DEM data (Farr and Kobrick, 2000; van Zyl, 2001; Rabus et al., 2003) brought the possibility of regional geomorphological analysis in a fast and inexpensive way.

In this work, we considered the morphometric parameters slope, aspect, surface roughness and isobase surface to present an evaluation of SRTM 03" data applicability in geomorphology and morphotectonics. The study area, located in southeastern Brazil, comprises the Poços de Caldas Alkaline Massif, a 33 km-diameter Late Cretaceous collapsed volcanic caldera.

2. Geological and geomorphological context

The Cabo Frio Magmatic Lineament, as defined by Almeida (1991), is a WNW–ESE structural feature, 60 km wide by 1150 km long, developed from Jaboticabal (Northern São Paulo State) eastwards, up to the Almirante Saldanha Bank, region of the boundary between continental and oceanic crusts.

Located in the central-western portion of the Cabo Frio Magmatic Lineament, the Poços de Caldas Alkaline Massif (Figs. 1 and 2) is the largest alkaline complex in Brazil with about 800 km², composed mainly of nepheline syenites, phonolites, ankaratrites and volcanoclastic rocks (phonolitic tuffs and lapilli-tuffs, volcanic agglomerates and breccias); diabases, carbonatites and ultramafic ultrapotassic biotite lamprophyre dikes occur as subordinated rock types (Ulbrich and Gomes, 1981; Schorscher and Shea, 1992, Alves, 2003). Shea (1992) obtained an Ar–Ar age of 78 ± 3 Ma for the central nepheline syenite body of the caldera, representing one of the earlier stages of its evolution, and an age of 76 ± 2 Ma for a lamprophyre dike related to the final stage of volcanic activity.

The alkaline massif main morphology is a semi-circular plateau with average altitude of 1300 m rising up to 400 m above surrounding flatlands (Poços de Caldas Plateau, Fig. 2), with elevations up to 1500–1600 m in its borders. Original vegetation coverage consisted of *cerrado* (savanna) and now most of the area is covered by pasture (RADAM-BRASIL, 1983).

This plateau is a remnant of the South American Planation Surface (King 1956, 1967) and resulted from differential erosion of basement rocks and volcanic ring dikes around the massif at the Late Cretaceous–Paleogene transition. Landforms within the massif are closely linked with contrasts in lithology (Holmes et al., 1992) and with Pleistocenic and Holocenic tectonic structures (Alves, 2004). Contrast between tectonic and lithologic influence on geomorphology favors morphotectonic analysis.

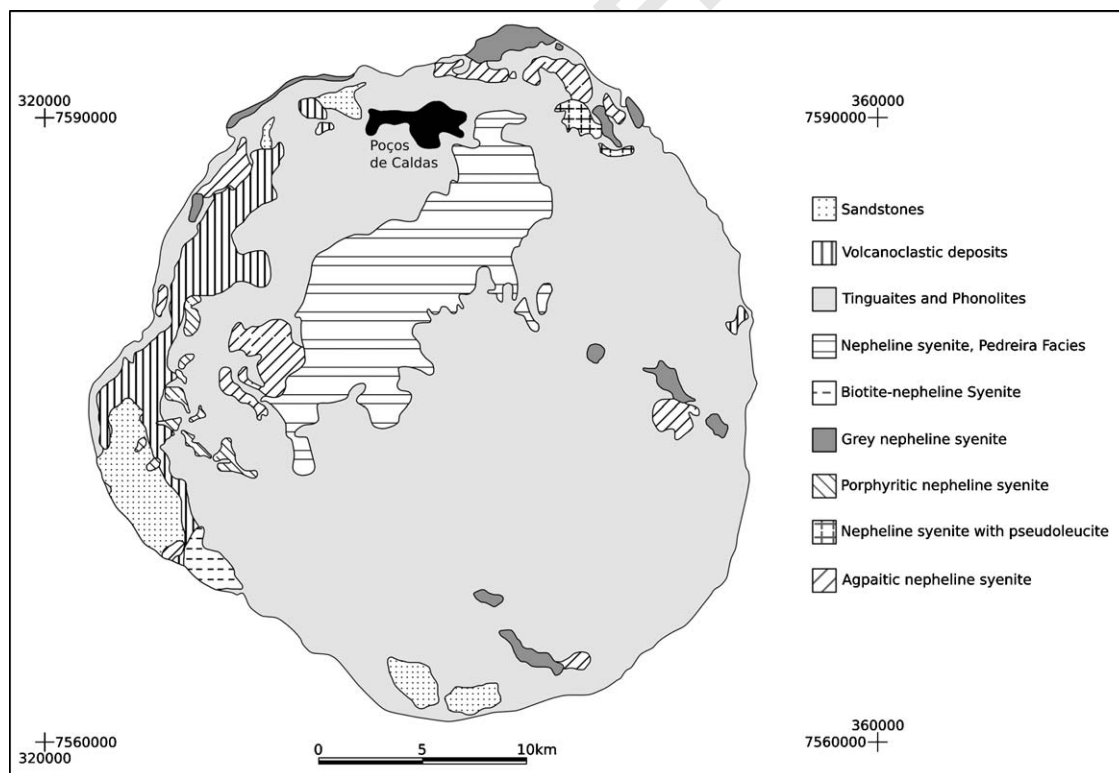


Fig. 1. Simplified geological map of Poços de Caldas Alkaline Massif. After Ruberti et al. (2000). UTM coordinate system, Zone 23, southern hemisphere.

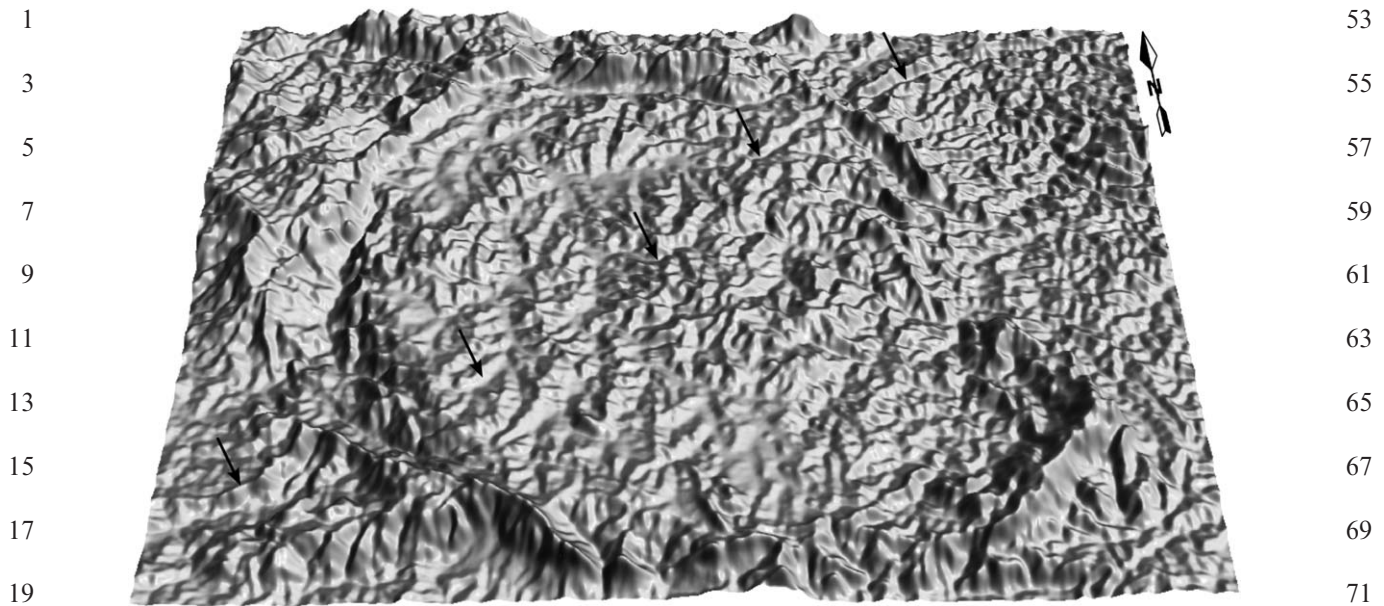


Fig. 2. SRTM DEM 3D Perspective of Poços de Caldas Alkaline Massif, view from south to north, vertical exaggeration of $3.5 \times$.

3. Methods

Analysis were carried out with free software GRASS-GIS (Neteler and Mitasova, 2004; GRASS Development Team, 2005) as proposed by Grohmann (2004). Original SRTM data were imported into GRASS, reprojected to UTM coordinate system and resampled by nearest neighbors to a spatial resolution of 50 m, in order to work at a 1:50,000 scale. In the original data only a small void was present, and was filled by interpolation with regularized splines with tension (RST—Mitasova and Hofiarta, 1993; Mitasova and Mitas, 1993).

Slope and aspect were calculated with a 3×3 neighborhood operator (Horn, 1981). Aspect was converted from its original output (i.e., counter-clockwise from east) to conventional orientation (clockwise from north) and classified into eight categories, each corresponding to a 45° interval.

Day (1979) describes surface roughness as the expression of non-systematic variability of the topographic surface, and used the dispersion of vector normals to surface plans as a roughness indicator to discriminate tropical karst stiles. Hobson (1972), describes it as the ratio between surface (real) area and flat (plan) area of square cells; in this approach, flat surfaces would present values close to 1, whilst in irregular ones the ratio shows a curvilinear relationship which asymptotically approaches infinity as the real areas increases.

Ferrari et al. (1998) argue that surfaces with distinct characteristics can present the same roughness value, due to the existence of interactions between the number and magnitude of terrain irregularities. Grohmann (2004), considers this method useful for morphological characterization since it is mainly related with the shape of landforms and not its elevation; thus, tectonically tilted areas have their expression shown, while it could be masked in a hypsometric map (Fig. 3), as consequence of altimetric variations.

In this work, surface roughness was considered as the ratio between surface and plan area of 1×1 km cells. Surface area of the 1 km cells was achieved by summing up the real area of individual cells (50×50 m, Fig. 4) within a 1×1 km window.

SRTM data can be biased by canopy variations; in areas of dense forest coverage such effect can account for increasing overall DEM height and act as a smooth blanket over terrain, hiding minor details (Valeriano et al., 2006). In the study area, original vegetation was widely removed and replaced by pasture; in its original form it consists of *cerrado*, savanna-like grassland scattered with shrubs and isolated trees (Radambrasil, 1983).

Prior to drainage extraction, the DEM was smoothed with a 7×7 filter that fits quadratic surfaces to elevation values (*r.param.scale* command, Wood, 1996a, b), in order to prevent creation of artifacts (O'Callaghan and Mark, 1984; Gar-

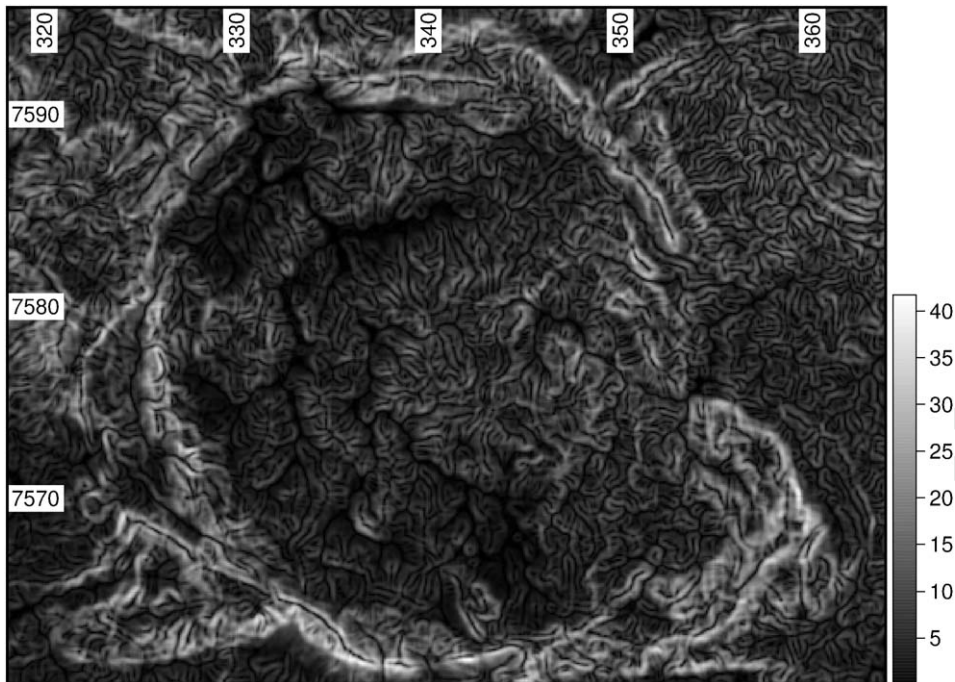


Fig. 3. Slope map. Values in degrees.

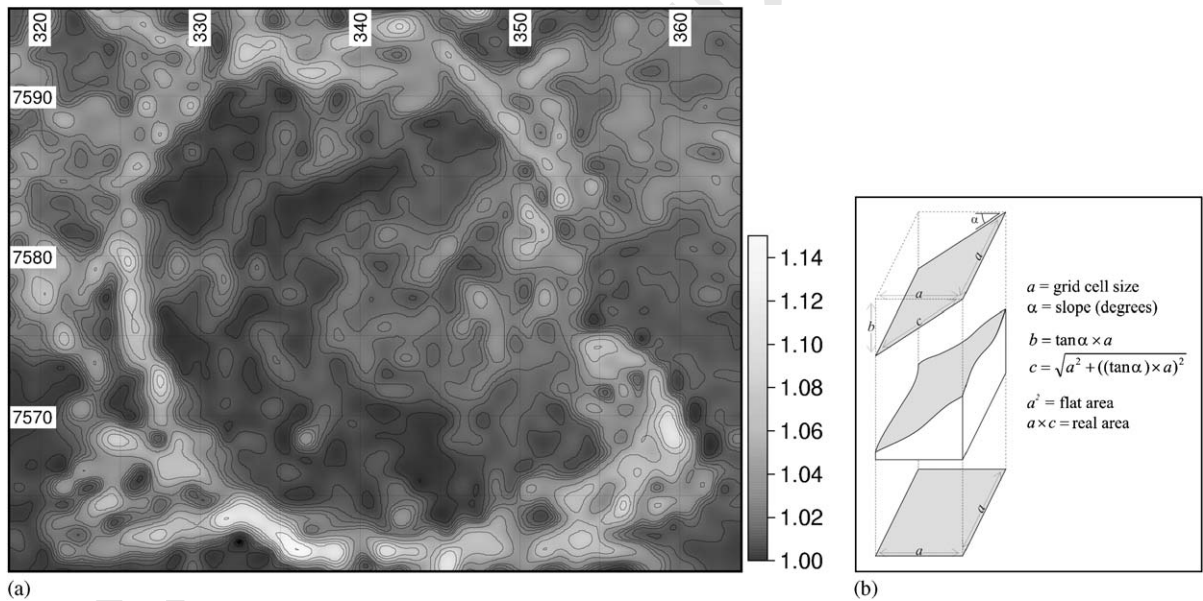


Fig. 4. (a) Surface roughness map, for cells with 1×1 km. (b) Geometric relations between regular grid and slope.

brecht and Martz, 1999) and to minimize both the effects of noise that SRTM data present in flat areas (Guth, 2006; Huisenga, 2005) and possible canopy variations.

Drainages were calculated using the A^T least-cost search algorithm (*r.watershed* command, Ehlschlae-

ger, 1989), with a threshold value of 50 cells as minimum watershed size (Fig. 5). DEM-derived drainage can be compared against drainage from a 1:50,000 topographic map in Fig. 6. Raster streams were converted to vectors and manually classified

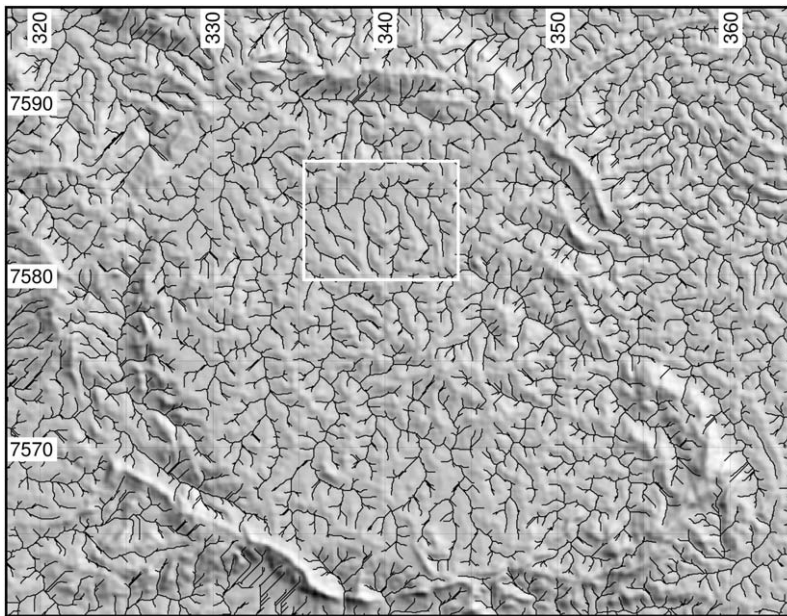


Fig. 5. DEM-derived drainages over shaded relief image. White rectangle area is enlarged in Fig. 6.

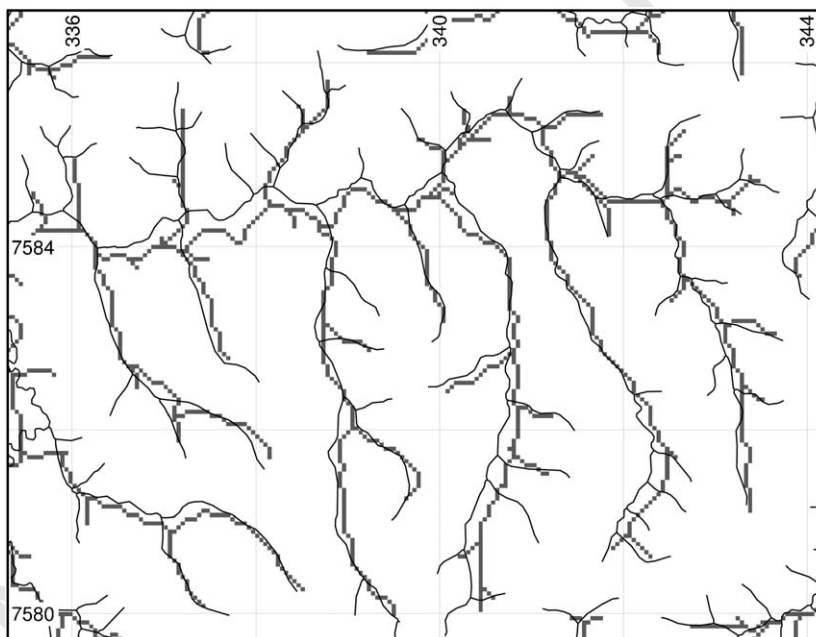


Fig. 6. Vector drainages of 1:50,000 topographic map overlaid on DEM-derived drainages.

according to Strahler's (1952) drainage order scheme.

The isobase method (Filosofov, 1960; Golts and Rosenthal, 1993), concerns about relations between stream channel order and topography. The stream order refers to the relative position of stream segments in a drainage basin network; within such

basin, streams of similar orders relate to similar geological events and are of similar geological age (Golts and Rosenthal, 1993).

According to Filosofov (1960), isobase is a line that delineates an erosional surface; the isobase surface is formed by connecting stream profiles of

53

55

57

59

61

63

65

67

69

71

73

75

77

79

81

83

85

87

89

91

93

95

97

99

101

103

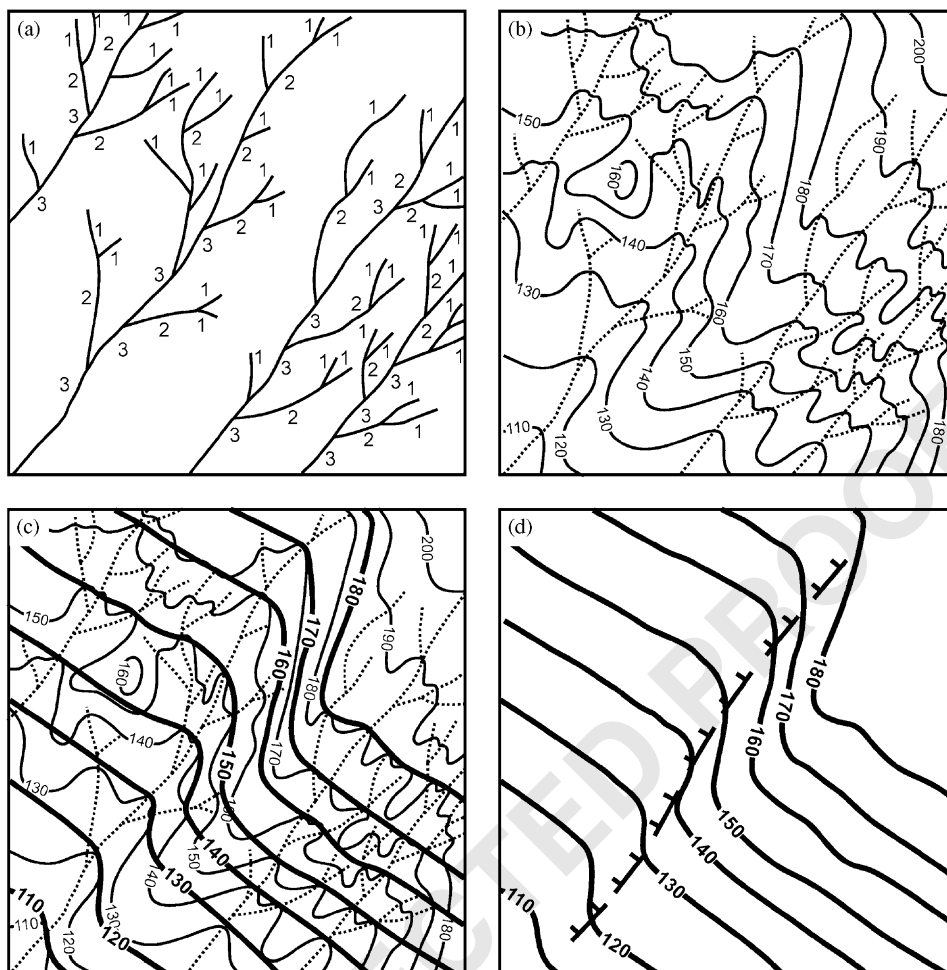


Fig. 7. Development of isobase map. (a) Definition of stream orders. (b) Overlay of drainage network and contours. (c) Isobase lines derived from second and third-order streams. (d) Fault traced according to deviations of isobase lines. Reprinted from Golts and Rosenthal, *Geomorphology* 7:305–315, Copyright 1993, with permission from Elsevier.

similar order and disregarding topography above isobase surface (Fig. 7).

Isobase lines draw erosional surfaces, hence isobase surfaces are related to tectonic-erosional events, mainly the most recent ones. Abrupt deviations in isobase lines directions may be reflect of tectonic dislocations or severe lithological changes (Golts and Rosenthal, 1993).

The isobase map can be seen as a ‘simplified’ version of the original topographic surface, from which was removed the ‘noise’ of the 1st-order streams erosion. The main goal of this method is to be able to identify areas with possible tectonic influence even within lithological uniform domains, what cannot be achieved with ‘base-level’ maps, usually constructed from elevations of thalwegs in a given area, or with swath profiles (Baulig, 1926;

Tricart and Cailleux, 1957) were intersections of contours with equally spaced profile lines are marked within a swath, or band; this kind of profile is useful to provide a broader view of altimetric behavior and help to determine inclination of large topographic features in planaltic regions (Meis et al., 1982).

The isobase map (Fig. 8) was made by RST interpolation of altitude values from intersections of contours with second- and third-order stream channels.

4. Discussion

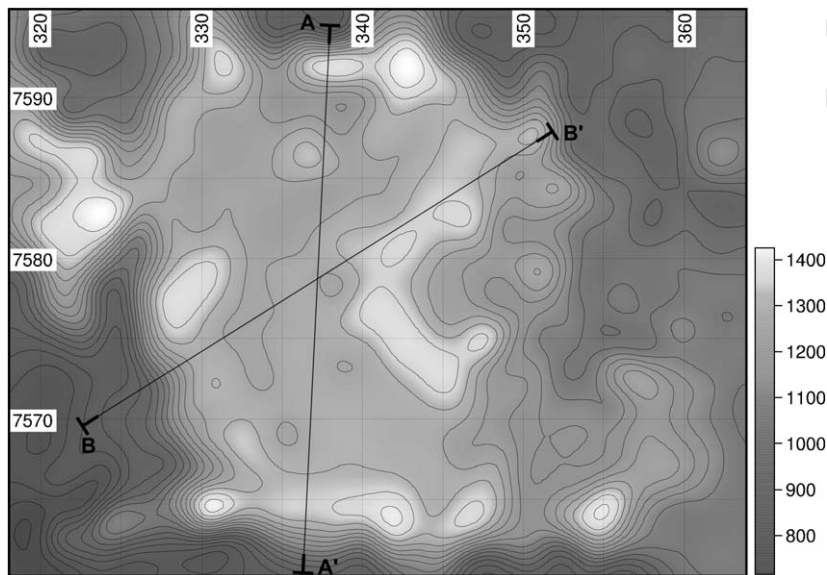
The Poços de Caldas Alkaline Massif stands as a high plateau in a strongly eroded area, and preserves, in its ring dikes, the remnants of the

1 South American Planation Surface, developed at
2 the Late Cretaceous–Paleogene transition.

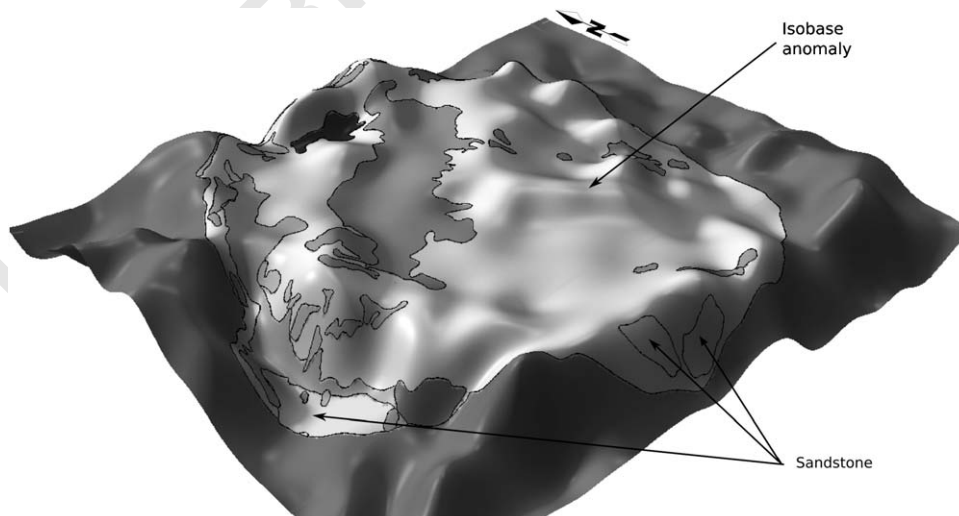
3 Slopes within the massif are small, generally
4 lower than 10° (Poços de Caldas Plateau); higher
5 values, up to 40° , occur mainly in the massif's
6 borders (Fig. 3). Localized areas with high slope
7 values occur within the Plateau, generally aligned
8 NE–SW. The aspect map shows slopes facing
9 mostly NW and SE within the Plateau, controlled
10 by NE–SW lineaments; the volcanic edifice exhibits
11 a radial pattern of aspect distribution.

53 In the surface roughness map (Fig. 4a) is possible
54 to see some very flat areas, with values close to 1,
55 roughly aligned NE–SW (northern Plateau) and
56 NW–SE (southern Plateau). The expression of the
57 massif borders is marked by the higher values,
58 ranging from 1.07 up to 1.15.

59 The isobase map (Fig. 8) not only gives a good
60 delimitation of the massif, with higher values, but
61 also presents some typical characteristics of areas
62 that went trough tectonic activities, such as
63 approach, separation and sudden inflection of
64 isobase lines (Golts and Rosenthal, 1993). Isobase
65



33 Fig. 8. Isobase map.



51 Fig. 9. 3D-view of geology draped over isobase surface, viewed from southwest to northeast. Vertical exaggeration of $10 \times$.

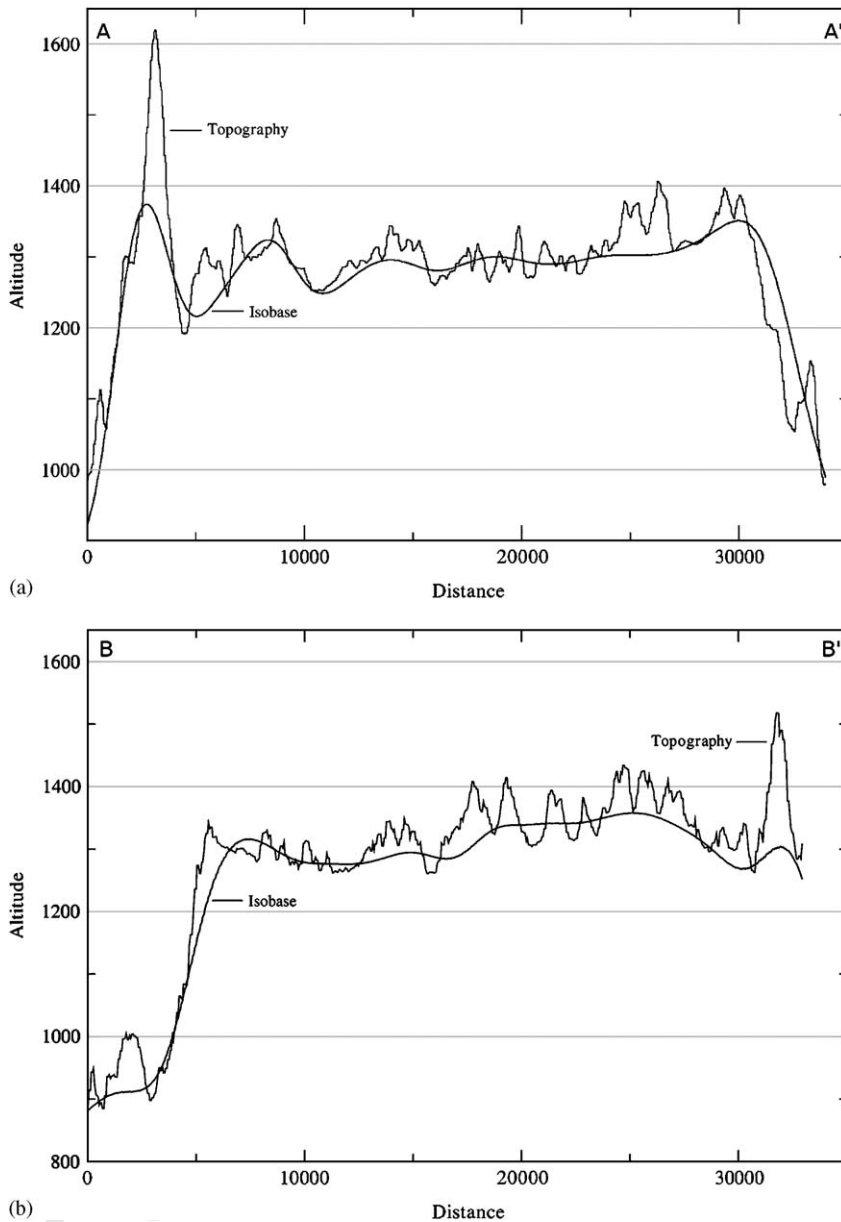


Fig. 10. Morphological profiles across massif showing topography and isobase relations. (a) N-S profile. (b) SW-NE profile.

lines within the plateau show trends in NE-SW and NW-SE directions, both in areas where lines are close to each other as well as when they are separated.

There is a partial coincidence of a lithologic change in the northeastern portion of the massif and a strong NE-SW isobase anomaly, which turns abruptly to NW-SE in the central area of the plateau, without any associated variation in lithology. This large anomaly is related to a NE-SW fault that cuts throughout the entire massif (Fig. 2), identified by Almeida Filho and Paradella (1977).

Geomorphological settings related to tectonic and lithologic controls can be better seen when the geological map is draped over a 3D model of isobase surface (Fig. 9). Sandstones in the western border of the massif are in a depressed region, while the strong NE-SW isobase anomaly roughly follows the contact of the central nepheline syenite body and turns to a NW-SE direction in a lithologically homogeneous area.

Morphological profiles across the massif in the N-S (Fig. 10a) and SW-NE (Fig. 10b) directions

1 show the relations between topography and isobase.
 2 Although the isobase curve does not pass exactly
 3 under the valley bottoms, perhaps due the need of
 4 fine adjustments to interpolation parameters, it is
 5 possible to see areas where the first-order drainages
 6 incision is more prominent, thus more likely to
 7 reflect strong differences in weathering resistance of
 8 rocks, or recent tectonic activity.

5. Conclusions

11 The contrast between tectonic and lithologic
 12 influence on Poços de Caldas Alkaline Massif's
 13 geomorphology favors morphotectonic analysis.
 14 Regional geomorphological configuration is a remnant
 15 of the Late Cretaceous–Paleogene South
 16 American Planation Surface, while landscape within
 17 the plateau is controlled by structures trending
 18 NE–SW and NW–SE. Isobase analysis allowed
 19 discrimination of areas where the dominant geo-
 20 morphic process is related to differential erosion
 21 from areas affected by recent tectonics. Drainage
 22 extraction from DEM presented satisfactory results
 23 when compared to a 1:50,000 topographic map.

24 SRTM DEM proved to be a good resource for
 25 geomorphological analysis at a semi-detail scale.
 26 Availability of data assures that analysis can be
 27 carried out in a fast and inexpensive way, even in
 28 areas of poor topographic coverage.

31 Uncited reference

33 Riccomini et al., 2005.

35 Acknowledgments

37 This work was supported by FAPESP grant 04/
 38 06260-5 (C.H.G. Doctor's Degree Fellowship) and
 39 CNPq Grant 303910/1986-0 (C.R.).

41 The authors are thankful to all who have
 42 contributed to the development of this work, to
 43 the anonymous reviewers for their critics and
 44 suggestions and to all participants of the *Shuttle
 45 Radar Topography Mission Data Validation and
 46 Applications Workshop*, held in the USGS Head-
 47 quarters (Reston, VA), in June 2005.

49 References

51 Almeida, F.F.M., 1991. O alinhamento magmático de Cabo Frio.
 In: Simpósio de Geologia do Sudeste, 2, São Paul. Atas, São
 Paulo, SBG/SP-RJ, pp. 423–428.

- Almeida Filho, R., Paradella, W.R., 1977. Estudo do Maciço
 Alcalino de Poços de Caldas através de imagens Landsat com
 ênfase em mineralizações radioativas. Report of Instituto
 Nacional de Pesquisas Espaciais INPE (11/2-TPT/065). 53
 55
 Alves, A.D., 2003. Rochas vulcanoclásticas do Complexo
 Alcalino de Poços de Caldas—MG/SP. M.Sc. Thesis, 57
 Institute of Geosciences, University of São Paulo, Brazil,
 106pp. 59
 Alves, F.M., 2004. Tectônica rúptil do Maciço Alcalino de Poços
 de Caldas no contexto do Alinhamento Magmático de Cabo
 Frio. Undergraduate Monograph, Institute of Geosciences,
 University of São Paulo, Brazil. 47pp. 61
 Baulig, H., 1926. Sur une méthode d'analyse altimétrique
 appliquée à la Bretagne. Bulletin de l'Association de
 Géographie Française 10, 7–9. 63
 Day, M.J., 1979. Surface roughness as a discriminator of tropical
 karst styles. Zeitschrift für Geomorphologie 32 (Suppl.), 1–8. 65
 Ehlschlaeger, C.R., 1989. Using the AT search algorithm to
 develop hydrologic models from digital elevation data. In:
 Proceedings of the International Geographic Information
 Systems (IGIS) Symposium '89. Baltimore, pp. 275–281. 67
 Farr, T.G., Kobrick, M., 2000. Shuttle radar topography mission
 produces a wealth of data. American Geophysical Union EOS
 81, 583–585. 71
 Ferrari, J.A., Hiruma, S.T., Karmann, I., 1998. Caracterização
 morfológica de uma superfície cárstica do Vale do Ribeira,
 São Paulo (Núcleo Caboclos—PETAR). Revista do Instituto
 Geológico 19, 9–17. 73
 Filosofov, V.P., 1960. Brief Guide to Morphometric Methods in
 Search of Tectonic Structures. Saratov University Publishing
 House, Saratov (in Russian). 77
 Garbrecht, J., Martz, L.W., 1999. Digital elevation model issues
 in water resources: modeling. In: 1999 ESRI Users Con-
 ference Proceedings. Electronic Document: [http://gis.esri.com/
 library/userconf/proc99/proceed/papers/pap866/p866.htm](http://gis.esri.com/library/userconf/proc99/proceed/papers/pap866/p866.htm) 79
 81
 Golts, S., Rosenthal, E., 1993. A morphotectonic map of the
 northern Arava in Israel, derived from isobase lines.
 Geomorphology 7, 305–315. 83
 GRASS Development Team, 2005. Geographic Resources
 Analysis Support System (GRASS), GNU General Public
 License. Electronic document, <http://grass.itc.it> 85
 87
 Grohmann, C.H., 2004. Morphometric analysis in geographic
 information systems: applications of free software GRASS
 and R. Computers and Geosciences 30, 1055–1067. 89
 Guth, P.L., 2006. Geomorphometry from SRTM: comparison to
 NED. Photogrammetric Engineering and Remote Sensing 72,
 269–278. 91
 Hobson, R.D., 1972. Surface roughness in topography: quanti-
 tative approach. In: Chorley, R.J. (Ed.), Spatial Analysis in
 Geomorphology. Methuen, London, pp. 225–245. 93
 Holmes, D.C., Pitty, A.E., Noy, D.J., 1992. Geomorphological
 and hydrogeological features of the Poços de Caldas analogue
 study sites. Journal of Geochemical Exploration 45, 215–247. 95
 97
 Horn, B.K.P., 1981. Hill shading and the reflectance map.
 Proceedings of the IEEE 69, 14–47.
 Huisenga, J., 2005. Impact of SRTM data on geospatial support
 to US Army operations. In: Abstracts Volume, The Shuttle
 Radar Topography Mission Data Validation and Applica-
 tions Workshop, Reston VA, Abstract 43. 101
 King, L.C., 1956. Geomorfologia do Brasil Oriental. Revista
 Brasileira de Geografia 18, 147–266. 103

- 1 King, L.C., 1967. Morphology of the Earth, second ed. Oliver & Boyd, Edinburgh.
- 3 Meis, M.R.M., Miranda, L.H.G., Fernandes, N.F., 1982. Desniveleamentos de altitude como parâmetros para a compartimentação de relevo: bacia do médio-baixo Paraíba do Sul. In: Proceedings of Congresso Brasileiro de Geologia XXXII, Salvador, vol. 4, pp. 1489–1503.
- 5 Mitasova, H., Hofier, J., 1993. Interpolation by regularized spline with tension: II. application to terrain modeling and surface geometry analysis. *Mathematical Geology* 25, 657–669.
- 7 Mitasova, H., Mitas, L., 1993. Interpolation by regularized spline with tension: I. Theory and implementation. *Mathematical Geology* 25, 641–655.
- 9 Neteler, M., Mitasova, H., 2004. Open Source GIS: A GRASS GIS Approach, Second ed. Kluwer Academic Publishers, Bosto, MA, 424pp.
- 11 O'Callaghan, J.F., Mark, D.M., 1984. The extraction of drainage networks from digital elevation data. *Computer Vision, Graphics, and Image Processing* 28, 323–344.
- 13 Pike, R.J., 2002. A bibliography of terrain modeling (geomorphometry)—the quantitative representation of topography—Supplement 4.0. US Geological Survey Open-File Report 02-465.
- 15 Rabus, B., Eineder, M., Roth, R., Bamler, R., 2003. The shuttle radar topography mission—a new class of digital elevation models acquired by spaceborne radar. *ISPRS Journal of Photogrammetry and Remote Sensing* 57, 241–262.
- 17 Radambrasil, 1983. Levantamento de Recursos Naturais. Rio de Janeiro/Vitória: geologia, geomorfologia, pedologia, vegetação e uso potencial da terra. Rio de Janeiro, Ministério de Minas e Energia, folhas SF. 23/24p.
- 19 Riccomini, C., Velázquez, V.F., Gomes, C.B., 2005. Tectonic controls of the Mesozoic and Cenozoic alkaline magmatism in central-southeastern Brazilian Platform. In: Gomes, C.B., Comin-Chiaromonte, P. (Eds.), *Mesozoic to Cenozoic Alkaline Magmatism in Central-Southeastern Brazilian Platform*, pp. 1–26.
- 21 Ruberti, E., Gomes, C.B., Melcher, G.C., Ulbrich, H.H.G.J., Ulbrich, M.N.C., 2000. The Jacupiranga carbonatite complex (Part I) and the Poços de Caldas massif (Part II)—São Paulo and Minas Gerais States, Eastern Brazil. In: International Geological Congress, 31, Rio de Janeiro, Brazil, August 6–17, 2000. Post-Congress Field Trip Aft 08 Guide. Rio de Janeiro, 44pp.
- 23 Schorscher, H.D., Shea, M.E., 1992. The regional geology of the Poços de Caldas alkaline complex: mineralogy and geochemistry of selected nepheline syenites and phonolites. *Journal of Geochemical Exploration* 45, 25–51.
- 25 Shea, M.E., 1992. Isotopic geochemical characterization of selected nepheline syenites and phonolites from Poços de Caldas alkaline complex, Minas Gerais, Brazil. *Journal of Geochemical Exploration* 45, 173–214.
- 27 Strahler, A.N., 1952. Hypsometric (area-altitude) analysis of erosional topography. *Colorado: Bulletin of the Geological Society of America* 63, 1117–1142.
- 29 Tricart, J., Cailleux, A., 1957. *Cours de Geomorphologie I: Geomorphologie Structurale*. C.D.U. Paris, 252pp.
- 31 Ulbrich, H.H.G.J., Gomes, C.B., 1981. Alkaline rocks from continental Brazil. *Earth Science Reviews* 17, 135–154.
- 33 Valeriano, M.M., Kuplich, T.M., Storino, M., Amaral, B.D., Mendes Jr., J.N., Lima, D.J., 2006. Modeling small watersheds in Brazilian Amazonia with shuttle radar topographic mission-90 m data, *Computers and Geosciences*, in press.
- van Zyl, J.J., 2001. The shuttle radar topography mission (SRTM): a breakthrough in remote sensing of topography. *Acta Astronautica* 48, 559–565.
- Wood, J., 1996a. Scale-based characterization of digital elevation models. In: Parker, D. (Ed.), *Innovations in GIS 3*. Taylor and Francis, London (Chapter 13).
- Wood, J., 1996b. The geomorphological characterization of digital elevation models. Ph.D. Dissertation, University of Leicester, Leicester, UK, 185pp.